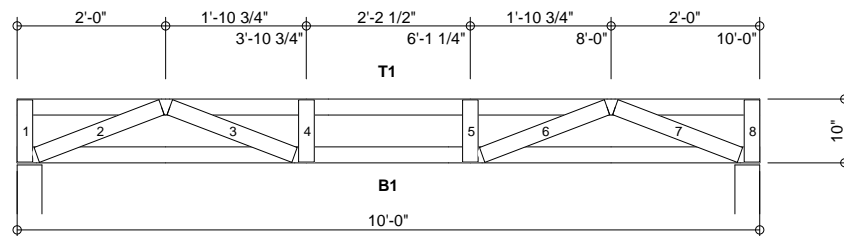
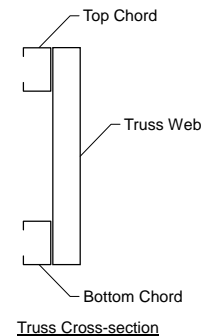


MATERIAL CUT LIST	Material	Unit/Length	Quantity	Screws
Metal Screw	#12 Drivall	0	702	
Metal Screw	#10 Drivall	0	60	
Simpson	S/H1	0	20	
B1	250S162-43(33)	10'-0"	10	
T1	250S162-43(33)	10'-0"	10	
Web #1	250S162-43(33)	9 3/4"	10	4
Web #2	250S162-43(33)	1'-9 1/2"	10	5
Web #3	250S162-43(33)	1'-9 1/2"	10	4
Web #4	250S162-43(33)	9 3/4"	10	4
Web #5	250S162-43(33)	9 3/4"	10	4
Web #6	250S162-43(33)	1'-9 1/2"	10	4
Web #7	250S162-43(33)	1'-9 1/2"	10	5
Web #8	250S162-43(33)	9 3/4"	10	4
B_Chld Lateral Brace	250S162-33(33)	18'-3"	1	
B_Chld Diagonal Brace	250S162-33(33)	5'-9 1/16"	6	

GENERAL NOTES

- Number of fasteners noted in chart installed on each end of Web
- When connecting plates to chord or web members, fasteners must pass through the plate and member. If a joint connection has fasteners passing through the web, connector plate and chord, the fastener may be counted as part of the required number of fasteners for that joint.
- Minimum connector spacing (center to center or free edge) = 3/4"
- Truss connector type - #12 Drivall (Grabber)

Number of Trusses = 10 each
 Chord Cut Type = Square Cut
 Truss Spacing = 2'-0"
 Number of Plys = 1
 Weight per Truss = 29.9 lbs (per ply)



4 4 denotes number of chord-plate fasteners

Scale: 3/8" = 1'-0"



Rusk Component and Design

11357 Billings Ave
 Lafayette, CO 80026
 (303) 828-5747

Floor Truss

Lafayette, CO

Truss D&E, V23.05
 Date: 10-18-2013
 Time: 08:50
 Designer: BJR
 File: FT10-24-10
 Job Number: Floor-Truss

This document contains information
 proprietary to Rusk Component and Design
 and may not be used or reproduced without
 prior written consent. Contents subject to
 change without notice.

FT10-24-10

Frame Fabrication Dwg