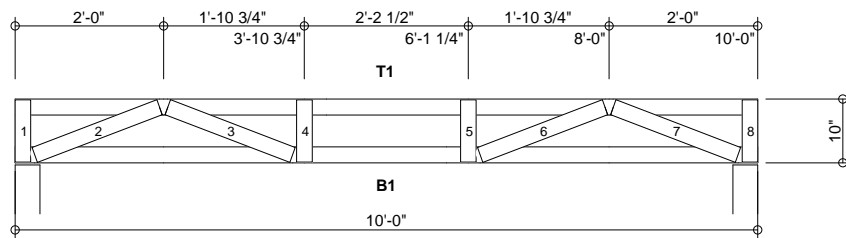
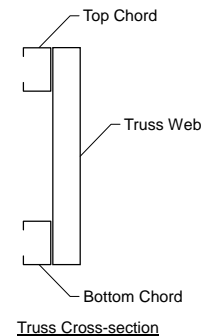


MATERIAL CUT LIST	Material	Unit/Length	Quantity	Screws
Metal Screw	#12 Drivall	0	872	
Metal Screw	#10 Drivall	0	60	
Simpson	S/H1	0	20	
B1	250S162-54(50)	10'-0"	10	
T1	250S162-54(50)	10'-0"	10	
Web #1	250S162-54(50)	9 3/4"	10	4
Web #2	250S162-54(50)	1'-9 1/2"	10	8
Web #3	250S162-54(50)	1'-9 1/2"	10	5
Web #4	250S162-54(50)	9 3/4"	10	4
Web #5	250S162-54(50)	9 3/4"	10	4
Web #6	250S162-54(50)	1'-9 1/2"	10	5
Web #7	250S162-54(50)	1'-9 1/2"	10	8
Web #8	250S162-54(50)	9 3/4"	10	4
B_Chld Lateral Brace	250S162-33(33)	20'-3"	2	
B_Chld Diagonal Brace	250S162-33(33)	5'-9 1/16"	6	

GENERAL NOTES

- Number of fasteners noted in chart installed on each end of Web
- When connecting plates to chord or web members, fasteners must pass through the plate and member. If a joint connection has fasteners passing through the web, connector plate and chord, the fastener may be counted as part of the required number of fasteners for that joint.
- Minimum connector spacing (center to center or free edge) = 3/4"
- Truss connector type - #12 Drivall (Grabber)

Number of Trusses = 10 each
 Chord Cut Type = Square Cut
 Truss Spacing = 4'-0"
 Number of Plys = 1
 Weight per Truss = 37.1 lbs (per ply)



4 4 denotes number of chord-plate fasteners

Scale: 3/8" = 1'-0"



Rusk Component and Design

11357 Billings Ave
Lafayette, CO 80026
(303) 828-5747

Floor Truss

Lafayette, CO

Truss D&E, V23.05
Date: 10-18-2013
Time: 08:56
Designer: BJR
File: FT10-48-10
Job Number: Floor-Truss

This document contains information proprietary to Rusk Component and Design and may not be used or reproduced without prior written consent. Contents subject to change without notice.

FT10-48-10

Frame Fabrication Dwg