

Connection	Section	Length	Axial	Int.	Fastener	Pa	Req.
BC #1	250S162-68(50)	19.79	7.33T	0.67	#12 Drivall	0.000	0
TC #1	250S162-68(50)	19.79	7.33C	0.76	#12 Drivall	0.000	0
Web # 1	250S162-68(50)	0.79	0.09C	0.01	#12 Drivall	0.609	4
Web # 2	250S162-68(50)	2.13	3.11C	0.45	#12 Drivall	0.609	6
Web # 3	250S162-68(50)	2.13	2.47T	0.52	#12 Drivall	0.609	5
Web # 4	250S162-68(50)	0.79	0.24C	0.03	#12 Drivall	0.609	4
Web # 5	250S162-68(50)	2.13	1.45C	0.21	#12 Drivall	0.609	4
Web # 6	250S162-68(50)	2.13	0.87T	0.18	#12 Drivall	0.609	4
Web # 7	250S162-68(50)	0.79	0.23C	0.03	#12 Drivall	0.609	4
Web # 8	250S162-68(50)	0.79	0.23C	0.03	#12 Drivall	0.609	4
Web # 9	250S162-68(50)	2.13	0.87T	0.18	#12 Drivall	0.609	4
Web # 10	250S162-68(50)	2.13	1.45C	0.21	#12 Drivall	0.609	4
Web # 11	250S162-68(50)	0.79	0.24C	0.03	#12 Drivall	0.609	4
Web # 12	250S162-68(50)	2.13	2.47T	0.52	#12 Drivall	0.609	5
Web # 13	250S162-68(50)	2.13	3.11C	0.45	#12 Drivall	0.609	6
Web # 14	250S162-68(50)	0.79	0.09C	0.01	#12 Drivall	0.609	4
BC Lateral Brace	250S162-33(33)	2.00	0.09C	0.03	#12 Drivall	0.268	1
BC Diagonal Brace	250S162-33(33)	3.89	0.18C	0.11	#12 Drivall	0.268	1

Connection	Simpson	each	Load	Uplift/Shear	Fastener	Pa	Req.
Truss Chord	S/H1	1	0.01		#12 Drivall	0.435	3
Steel Stud				0.01	#12 Drivall	0.435	3
Truss Chord	S/H1	1	0.01		#12 Drivall	0.435	3
Steel Stud				0.01	#12 Drivall	0.435	3

GENERAL NOTES

- Trusses require lateral bracing. See Truss Layout and Detail sheets.
- Top Chord continuously sheathed.
- Number of fasteners noted in chart installed on each end of Web
- Allowable fastener values based on LGSEA Research Note No. 1-00 and Grabber Chart.
- (ws) denotes web stiffener required at support.
- Member design based on sections in SSMA-RCD Library.

Maximum Deflections

Vertical	0.769 in (L / 312)
Horizontal	0.092 in
Vertical	0.275 in (L / 872) [Dead Load Only]
Vertical	0.494 in (L / 486) [Live Load Only]

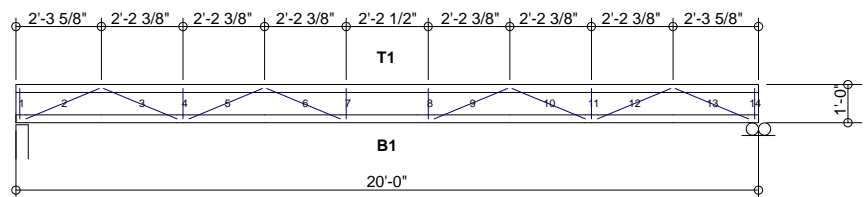
Support Reactions

	Down	Uplift*	Horizontal	Bearing
Left	1.23 {1.23}	-0.01	0.00	4.00
Right	1.23 {1.23}	-0.01	0.00	4.00

* Uplift Load Combination (Truss to Support Connection Only): 0.6Dead + 1.0Wind
{ } Denotes 'Dead+Live Only'

DESIGN DATA

Number of Trusses = 10 each
 Plate Style : Out-Of-Plane
 Eave Height : 10.667 ft (top of wall)
 Bearing : 4 in
 Spacing : 2.00 ft
 Dead Load : 10.00 psf (top chord)
 Dead Load : 10.00 psf (bottom chord)
 Live Load : 40.00 psf (top chord)
 Live Load : 0.00 psf (bottom chord)
 Snow Load : 12.00 psf (ground)
 Snow Load : 12.00 psf (design) [Is =1.00, Ce = 1.00]
 Wind Load : 22.35 psf (design) [Iw = 1.00]
 Wind Speed : 110 mph (Exposure C)
 Open Category: E
 Topography (Kz):1
 Building Category: (2) General
 Seismic Coefficient: 0.044



Per AISI S100-2007		Actual			Allowable			Ratio
Member	Section	Po	Vo	Mo	Pa	Va	Ma	
Bottom Chord	1-250S162-68(50)	7.33T	0.00	1.66	14.17	2.90	10.69	0.67
Top Chord	1-250S162-68(50)	7.33C	0.01	1.97	12.79	2.90	10.69	0.76
Web	1-250S162-68(50)	2.47T	0.00	1.46	14.17	2.90	4.28	0.52

International Building Code 2009: PASSED
 Design Method - (ASD)
 Component Wind Pressure Design (Interior)



Rusk Component and Design
 11357 Billings Ave
 Lafayette, CO 80026
 (303) 828-5747

Floor Truss
 Lafayette, CO

Truss D&E, V23.05
 Date: 10-18-2013
 Time: 09:55
 Designer: BJR
 File: FT12-24-20
 Job Number: Floor-Truss

FT12-24-20